

MWI 8 TE horizontal baling press

In terms of performance, efficiency and flexibility our mobile MWI 8 TE small baler is hard to beat. This compact baling press is extremely easy to operate: insert the strapping tape, switch it on and watch it go! The strapping and ejection of the bales is executed with ease. The complete bale ejection means that the compact bales are ejected by the machine directly onto a pallet and can be easily transported to a storage location.



Technical data

Order number:	6208194	Loading aperture width x Loading aperture length:	645 x 730 mm
EAN	4026631064293	Bale width x Bale height x Bale length:	650 x 505 x 500 mm
Pressing power:	80 kN	Bale weight:	70 kg
Specific pressing power:	24,37 N/cm ²	Method of loading:	manual
Driving power:	4 kW	Length x Width x Height:	2505 x 813 x 868 mm
Voltage / Frequency:	400 V / 50 Hz	Weight:	554 kg
Cycle time when idling vacío:	26 s	Type of consumables:	Strapping tape
Volume throughput in idle operation (theor.):	4,38 m ³ /h	Press material:	Plastic film, Mixed paper, Cardboard, Getränke und Aluminiumdosen
Loading height:	660 mm		

Product information



Mobile on castors



Suitable for cardboard as well as film



Compaction against counterplate by horizontal moving press ram



Compact design

Low overall height, large loading aperture, also suitable for bulky material.



Graphic-capable display

Intuitive, multilingual operational guidance via graphic description.



Feeding manual

The extremely large loading aperture makes the unit simple and convenient to load.

Drage Todorovic 54 ,34113
Kragujevac, SRBIJA
27 Glenstroke Drive, M1S 3A1
Toronto, Ontario, Canada
office@maroworldinc.com
www.maroworldinc.com





MWI 12 Gigant horizontal press

Our MWI 12 Gigant is in its element anywhere where voluminous cardboard packaging, plastic film or other materials need to be pressed. The extremely large loading aperture makes the unit simple and convenient to load. The result is compact bales which can be easily transported. And if the baler is required urgently in another part of the company – no problem: its 4 castors mean that it can be used anywhere at any time.

Technical data

Order number:	6214174	Loading aperture width x Loading aperture length:	800 x 1200 mm
EAN	4026631064309	Bale width x Bale height x Bale length:	800 x 600 x 900 mm
Pressing power:	140 kN	Bale weight:	170 kg
Specific pressing power:	29,16 N/cm ²	Method of loading:	manual
Driving power:	7,5 kW	Length x Width x Height:	4263 x 1030 x 1623 mm
Voltage / Frequency:	400 V / 50 Hz	Weight:	1330 kg
Cycle time when idling vacío:	30 s	Type of consumables:	Strapping tape
Volume throughput in idle operation (theor.):	10,63 m ³ /h	Press material:	Mixed paper, Cardboard, Getränke und Aluminiumdosen, Plastic film
Loading height:	780 mm		

Product information



Mobile on castors



Suitable for cardboard as well as film



Compaction against counterplate by horizontal moving press ram



Compact design

Low overall height, large loading aperture, also suitable for bulky material.



Graphic-capable display

Intuitive, multilingual operational guidance via graphic description.



Feeding manual

The extremely large loading aperture makes the unit simple and convenient to load.

Drage Todorovic 54,34113
Kragujevac, SRBIJA
27 Glenstroke Drive, M1S 3A1
Toronto, Ontario, Canada
office@maroworldinc.com
www.maroworldinc.com





MWI HL 1615 horizontal press

This all-purpose stationary baler is designed for high loads and completely flattens paper scraps, large cardboard boxes, plastic foils and comparable materials – even rigid paint cans and light metal barrels (up to 200 litres). To handle even extremely one-sided loads in the press chamber, the press ram guidance has a specially large and sturdy construction. Both large loading flaps, which together function as an oversize feeding opening, make it possible to compact voluminous materials simply and quickly without having to manually tear them into smaller pieces beforehand.

Technical data

Order number:	6219134	Loading aperture width x Loading aperture length:	700 x 1500 mm
EAN	4026631064316	Bale width x Bale height x Bale length:	700 x 800 x 1100 mm
Pressing power:	150 kN	Bale weight:	200 kg
Specific pressing power:	26,78 N/cm ²	Method of loading:	manual
Driving power:	7,5 kW	Length x Width x Height:	4470 x 1343 x 2042 mm
Voltage / Frequency:	400 V / 50 Hz	Weight:	1890 kg
Cycle time when idling vacío:	32 s	Type of consumables:	Strapping tape
Volume throughput in idle operation (theor.):	47 m ³ /h	Press material:	Getränke und Aluminiumdosen, Plastic film, Mixed paper, Cardboard
Loading height:	990 mm		

Product information



Mobile on castors



Suitable for cardboard as well as film



Compaction against counterplate by horizontal moving press ram



Compact design

Low overall height, large loading aperture, also suitable for bulky material.



Graphic-capable display

Intuitive, multilingual operational guidance via graphic description.



Feeding manual

The extremely large loading aperture makes the unit simple and convenient to load.

Drage Todorovic 54,34113
Kragujevac, SRBIJA
27 Glenstroke Drive, M1S 3A1
Toronto, Ontario, Canada
office@maroworldinc.com
www.maroworldinc.com



MWI HL 3521 S horizontal press



The MWI HL 3521 S, with its exceptionally large loading aperture is the perfect machine for compressing large quantities of paper, cardboard, foils or packaging material and for extremely large and bulky materials. It also has been especially designed for compressing strongly expanding material such as foam.

Technical data

Order number:	6249000	Bale width x Bale height x Bale length:	800 x 1000 x 1200 mm
Pressing power:	320 kN	Bale weight:	600 kg
Specific pressing power:	40 N/cm ²	Method of loading:	manual
Driving power:	22 kW	Length x Width x Height:	7900 x 1660 x 2485 mm
Voltage / Frequency:	400 V / 50 Hz	Weight:	7100 kg
Cycle time when idling vacío:	44 s	Type of consumables:	Strapping tape
Volume throughput in idle operation (theor.):	138 m ³ /h	Press material:	Polystyrene, HDPE / LDPE hollow containers & plastic bottles, Punch waste/residue, Big Bags, Cardboard, Mixed paper, Plastic film
Loading aperture width x Loading aperture length:	800 x 2100 mm		

Product information



Mobile on castors



Suitable for cardboard as well as film



Compaction against counterplate by horizontal moving press ram



Compact design

Low overall height, large loading aperture, also suitable for bulky material.



Graphic-capable display

Intuitive, multilingual operational guidance via graphic description.



Feeding manual

The extremely large loading aperture makes the unit simple and convenient to load.

Drage Todorovic 54,34113
Kragujevac, SRBIJA
27 Glenstroke Drive, M1S 3A1
Toronto, Ontario, Canada
office@maroworldinc.com
www.maroworldinc.com





MWI HL 3521 T horizontal press

The model MWI HL 3521 T can be filled via conveyor and is especially designed to compact tyres. Of course, other packaging materials can also be compressed.

Technical data

Order number:	6270000	Bale width x Bale height x Bale length:	800 x 1000 x 1200 mm
Pressing power:	320 kN	Bale weight:	850 kg
Specific pressing power:	40 N/cm ²	Method of loading:	manual
Driving power:	22 kW	Length x Width x Height:	7900 x 1660 x 2485 mm
Voltage / Frequency:	400 V / 50 Hz	Weight:	8100 kg
Cycle time when idling vacío:	44 s	Type of consumables:	Wire
Volume throughput in idle operation (theor.):	137 m ³ /h	Press material:	Mixed paper, Plastic film, Tyres, Big Bags, Polystyrene, Cardboard
Loading aperture width x Loading aperture length:	800 x 2100 mm		

Product information



Specially designed to compact tyres



Suitable for continuous loading with conveyor belt or similar



Safeguarding of the operating area with protective grid for maximum operator safety



Counterplate

Hydraulic counterplate for bale removal ensures optimum operating convenience and safety.

Drage Todorovic 54, 34113

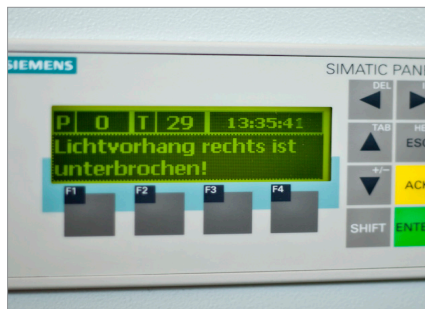
Kragujevac, SRBIJA

27 Glenstroke Drive, M1S 3A1

Toronto, Ontario, Canada

office@maroworldinc.com

www.maroworldinc.com



Display and PLC

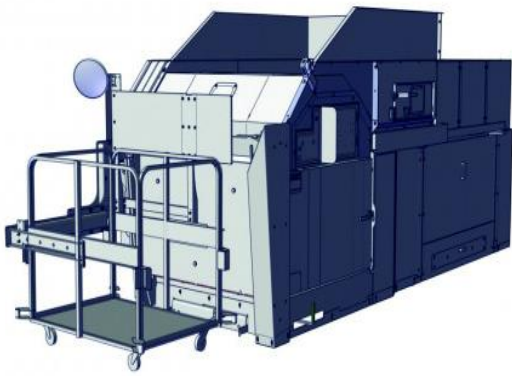
Multilingual operational guidance and Stored-program controller PLC.



Loading flaps

Hydraulic loading flap for maximum operating comfort.





MWI HL 4809 horizontal press

This very compact, horizontal working counter plate press is suitable for large disposal tasks in retail and in small to medium central storages. The HL 4809 ST produces bales with a cross-section of 1100 x 750 mm and a weight of up to 430 kg. The integrated hydraulic lifting/tilting device significantly reduces the number of people required to compact the recycling material.

Technical data

Order number:	6423304	Bale width x Bale height x Bale length:	1100 x 750 x 1200 mm
EAN	4026631065405	Bale weight:	420 kg
Pressing power:	480 kN	Method of loading:	Lifting/tilting system, wire mesh cart
Specific pressing power:	58 N/cm ²	Length x Width x Height:	5926 x 1978 x 2042 mm
Driving power:	11 kW	Weight:	5900 kg
Voltage / Frequency:	400 V / 50 Hz	Type of consumables:	Wire
Cycle time when idling vacío:	35 s	Press material:	Cardboard, Mixed paper, Plastic film
Volume throughput in idle operation (theor.):	32,81 m ³ /h		
Loading aperture width x Loading aperture length:	1020 x 900 mm		

Product information



Suitable for cardboard as well as film



Sturdy design

Very low space requirement thanks to compact and sturdy design.

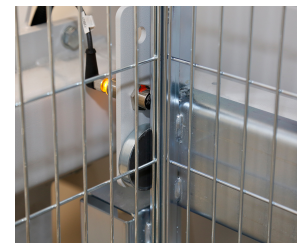


Convenient and particularly fast loading and discharge



Display and PLC

Multilingual operational guidance and Stored-program controller PLC.



Efficient truck loading

Optimised bale dimensions and bale weights for efficient truck loading.

Drage Todorovic 54 ,34113
Kragujevac, SRBIJA
27 Glenstroke Drive, M1S 3A1
Toronto, Ontario, Canada
office@maroworldinc.com
www.maroworldinc.com





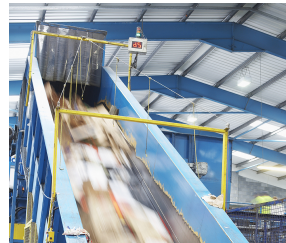
MWI HL 4812 horizontal press

The MWI HL 4812 has been designed with an operating concept and technical features in mind to make it the optimum machine for food retailers and small central storage facilities. It can be fed manually or via conveyor. Bale ejection is handled by the machine efficiently and safely with minimum operator effort. All in all a sophisticated solution for small to medium quantities at a great price-performance ratio and high automation level.

Technical data

Order number:	6402001	Bale width x Bale height x Bale length:	1100 x 750 x 1200 mm
Pressing power:	480 kN	Bale weight:	420 kg
Specific pressing power:	58 N/cm ²	Length x Width x Height:	5158 x 1642 x 2550 mm
Driving power:	22 kW	Weight:	5899 kg
Voltage / Frequency:	400 V / 50 Hz	Type of consumables:	Wire
Cycle time when idling vacío:	25 s	Press material:	Plastic film, Mixed paper, Cardboard
Volume throughput in idle operation (theor.):	130 m ³ /h		
Loading aperture width x Loading aperture length:	1020 x 1250 mm		

Product information



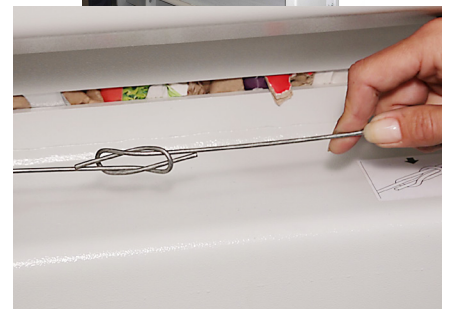
Pallet locking mechanism

Pallet locking mechanism for safe bale removal.



Sliding door

Hydraulic sliding door for bale removal ensures optimum operating convenience and safety.



Strapping

Manual bale strapping with Quick-link wire.

Drage Todorovic 54 ,34113
Kragujevac, SRBIJA
27 Glenstroke Drive, M1S 3A1
Toronto, Ontario, Canada
office@maroworldinc.com
www.maroworldinc.com





MWI HL 7009 horizontal press

This very compact, horizontal working counter plate press is suitable for large disposal tasks in retail and in small to medium central storages. The bales from a HL 7009 have a cross-section of 1100 x 1100 mm and a bale length of 1200 mm up to 600 kg in weight and therefore achieve an optimum HGV capacity. With the large bales from the HL 7009, you also save on handling expenses. The integrated hydraulic lifting/tilting device significantly reduces the number of people required to compact the recycling material.

Technical data

Order number:	6336124	Bale width x Bale height x Bale length:	1100 x 1100 x 1200 mm
EAN	4026631065795	Bale weight:	600 kg
Pressing power:	700 kN	Method of loading:	Lifting/tilting system, wire mesh cart
Specific pressing power:	58 N/cm ²	Length x Width x Height:	5992 x 2060 x 2394 mm
Driving power:	11 kW	Weight:	7334 kg
Voltage / Frequency:	400 V / 50 Hz	Type of consumables:	Wire
Cycle time when idling vacío:	47 s	Press material:	Cardboard, Mixed paper, Plastic film
Volume throughput in idle operation (theor.):	42,97 m ³ /h		
Loading aperture width x Loading aperture length:	1020 x 900 mm		

Product information



Suitable for cardboard as well as film



Suitable for continuous loading with conveyor belt or similar



Especially large loading aperture for bulky materials



Pallet locking mechanism

Pallet locking mechanism for safe bale removal.



Sliding door

Hydraulic sliding door for bale removal ensures optimum operating convenience and safety.



Strapping

Manual bale strapping with Quick-link wire.

Drage Todorovic 54 ,34113
Kragujevac, SRBIJA
27 Glenstroke Drive, M1S 3A1
Toronto, Ontario, Canada
office@maroworldinc.com
www.maroworldinc.com

