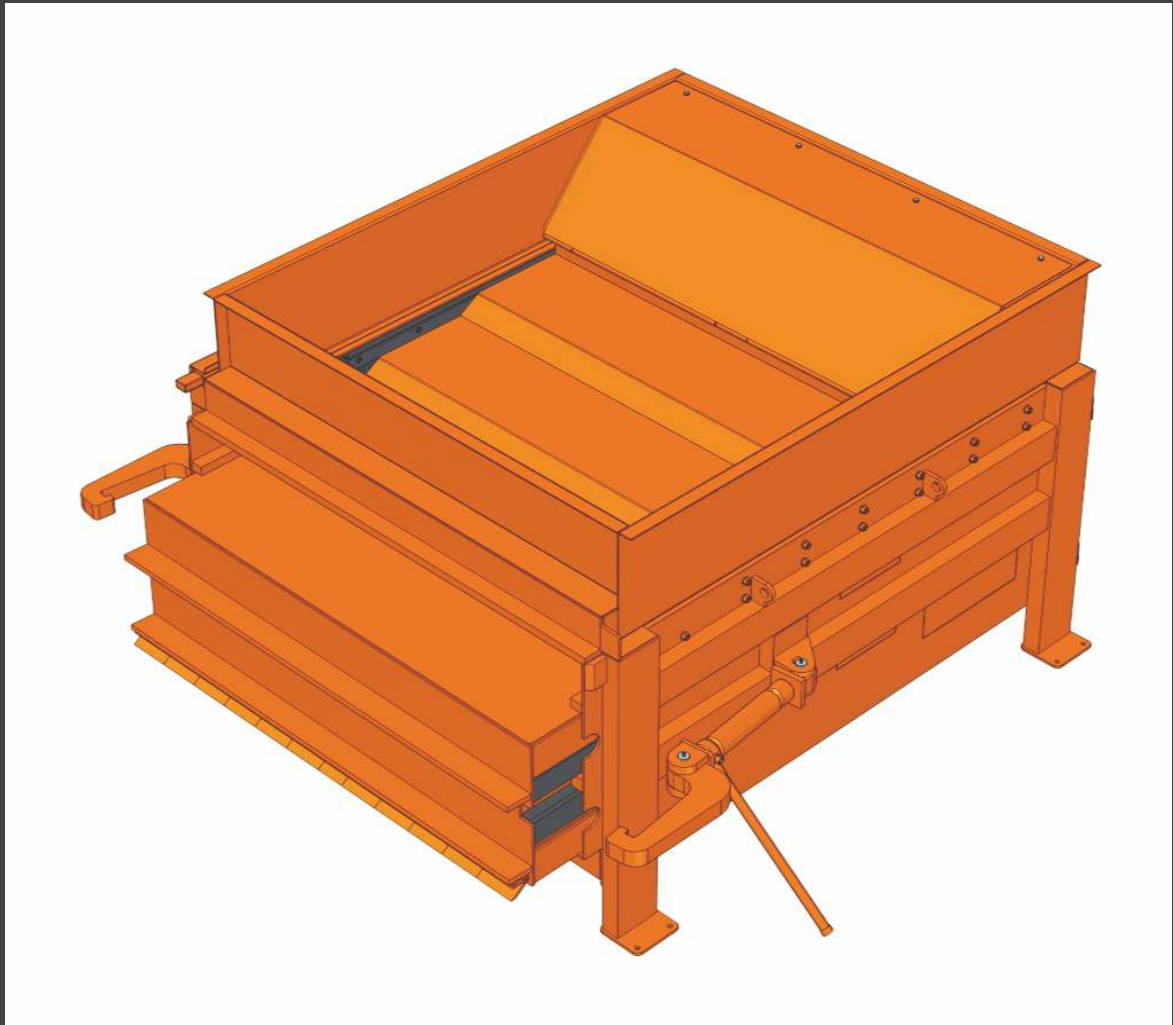


Static compactors

KBW

Issued: 04/2018



MR

MARO WORLD INC

WORLD OF HUMANS



45 million tons of waste is produced only by the German people per year - If this quantity was loaded in garbage trucks and they were placed one after another, they would reach all around the earth once.

With this, we are less about the quantity of waste than we are about handling of it: Waste material is no refuse - in waste material we see a valuable raw material. To be able to recycle this raw material, fully developed system solutions are required.



The MWI static compactors of series KBW are used in places where large quantities of residual material and recyclable raw material must be highly compacted prior to transport.

This allows optimum utilization of the permissible load capacity of transport vehicles and with this, cost-effective transport. It is suitable for compacting of residual waste, industrial waste, organic waste, film, paper and cardboard articles.

The compact design of the compacting system allows its application in collecting points where space is limited. Because only the press container is transported that is coupled to the compacting system, all in all, more material can be transported than it is possible with a mobile compacting system of the same dimensions.

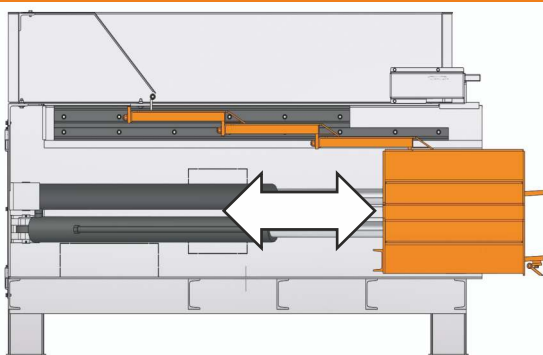
CE DIN The Static compactors of this series comply with the applicable standards and directives.

Production is guaranteed in our parent plant in Germany and the deployment of qualified personnel and most modern robot welders, as well as a standardized fixture construction provide for continuously high quality.

Supplied as standard

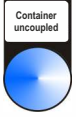
- Horizontal compaction system (with swinging steel stripper in front of the compaction ram).
- Compaction chamber bottom made of highly wear-resistant steel.
- Switching off of compaction ram in retracted position.
- Manual coupling (with ratchet) for L&M press container.
- Container request via ram.
- Compaction ram designed for movable tubes for closing the filling opening of an L&M press container.
- Integrated hydraulic unit (in compaction head).
- Hydraulic pump with only 63 dB(A).
- Pressure monitoring manometer with shut-off valve.
- Shut-off due to lack of oil or excess temperature.
- EEC plug with integrated phase reversal switch.
- Control cabinet with control elements and electrical connection, installed on the right side in pressing direction.
- Time relay for controlling the runtime of the compactor.
- CE - Declaration of conformity & documentation.
- One-colour painted in RAL colour (incl. corrosion protection class C3).

Horizontal compaction system



Standard control elements

- "ON / OFF" main switch (lockable with optional padlock) on the control cabinet
- "EMERGENCY STOP" push-button on the control cabinet and on the opposite side of the discharge opening
- "ON / OFF" key switch on the control cabinet
- "Manual / Auto" rotary switch on the control cabinet
- "Motor ON"- illuminated push-button (white) on the control cabinet
- "Operation" signal lamp (white) on the control cabinet
- "Press forward" & "Press backward" push-button (green) on the operator's side on the discharge opening
- "Fault / Reset" push-button (red) on the control cabinet
- "Container decoupled"- signal lamp (blue) on the control cabinet



2x KBW 1.593 with bifurcated hopper (incl. hydr. change flap)



KBW 1.593-H900 (H900 = 900mm high slider)



2x KBW 1.593 with 2-level wall connected hopper



KBW 1.593 with automatic container door locking device (for press container with door bulkhead)



KBW 1.593 with closure gate (for closing the opening between breaking edge and compaction ram)



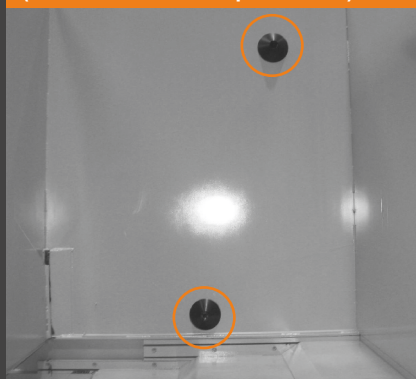
KBW 1.593 with traversing unit



KBW 1.593 with attached bin tipper for 1,100 l waste container (MGB)



Light barrier in the hopper extension (as start and overfill prevention)



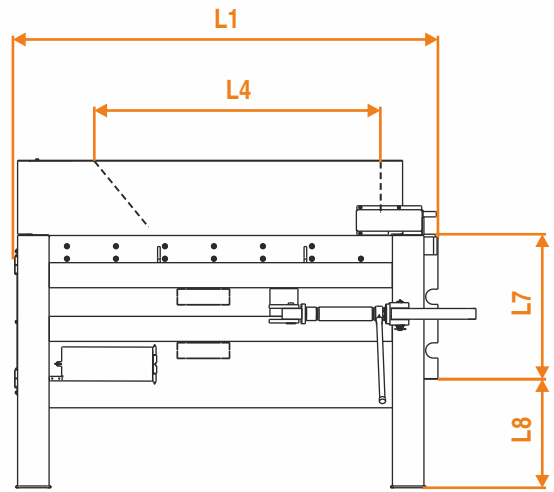
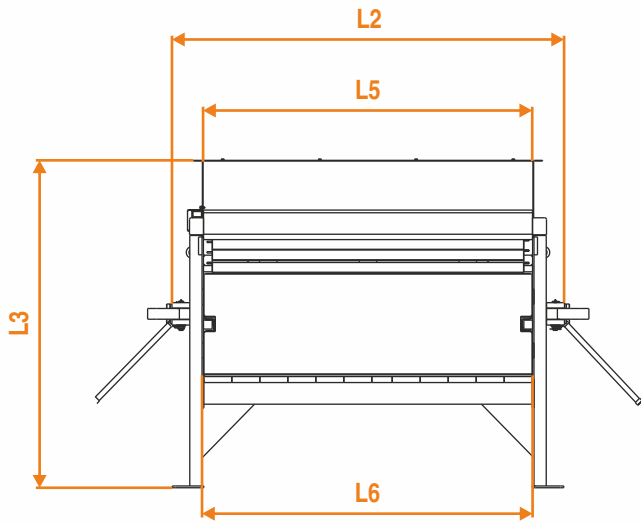
Additional equipment

We are offering you a wide range of additional equipment. Among others there are:

- Several coupling variants including a fully automatic version
- Several lid variants (hinged on the backside / divided lengthwise, hydraulic, manual,...)
- Individual hopper designs (e.g. bifurcated hopper, wall-connected hopper,...)
- Diverse hydraulic units with standard power classes up to 15kW
- H900-versions with increased compaction ram (= increased volume per stroke by 50%)
- Light barriers or ultrasonic probes as start device and / or as overfill prevention device
- 75 %- and / or 100 %-full container warnings with signal lamp, flashlight and / or signal horn
- Crushing plants for PPK or PET as extension.
- GSM alarm system in various designs Remote control in various design
- Oil cooler and /or oil heating with thermostat
- Longitudinal or transverse traversing units for the press container
- Automatic or manual sliding gate (for closing the opening between lower edge of the breaking edge and the upper edge of the compaction ram
- Attached bin tipper for all usual large waste containers as well as special containers

Further additional equipment is available on request.

Please contact us!



Technical specifications

Name		KBW 1,298	KBW 1,498	KBW 1,593
Plant	Length (L1) (mm)	1,730	2,120	2,420
	Width (L2) * ¹ (mm)	2,000	2,240	
	Height (L3)* ³ (mm)	1,670	1,525	1,580
Filling opening	Length (L4)* ² (mm)	1,180	1,460	1,760
	Width (L5) (mm)	1,650	1,885	
	Height (L3)* ³ (mm)	1,670	1,520	1,580
Discharge opening	Width (L6) (mm)	1,700	1,940	
	Height (L7) (mm)	890	745	805
	Height from bottom (L8)* ³ (mm)		360	
Compaction ram	Height (mm)	710	580	
	Width (mm)	1,640	1,875	
	Dipping depth (mm)	240	170	390
Time per working stroke (s)		45	42	55
Volume	per stroke (m ³)	1.2	1.3	1.8
	per hour (m ³)	96	112	118
Pressing force (kN)		300	340	
Driving power (kW)			5.5	
Cekon plug * ⁴ (A)			32	

Comments

- All details are subject to change
- Technical changes reserved
- All details refer to the series products
- Further types of construction / size available on request
- *¹ depending on the coupling installed, this measure will be greater
- *² For plants with bulkhead, this measure reduces by 120mm
- *³ For plants with bulkhead, this measure increases by 180mm.
- *⁴ optionally with permanent connection

KBW 1.593 with bin tipper attached on the side for special containers and special hopper extension



KBW 1.593 with stat. bin tipper for sweepings and single traversing unit



KBW 1.593 with attached bin tipper for special containers and wall connected hopper with auto. opening pendulum flap

