



EU OFFICE

Drage Todorovic 54,34113
Kragujevac, SRBIJA

CANADA OFFICE

27 Glenstroke Drive, M1S
3A1 Toronto, Ontario,
Canada

Phone:

+381 60 63-77-551

E-mail:

office@maroworldinc.com

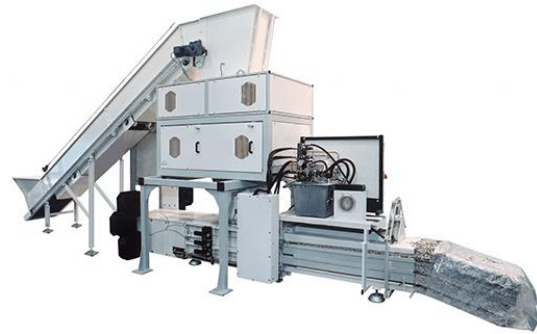
Web:

www.maroworldinc.com

MULTISTAGE SHREDDER SYSTEM MWI Duo Shredder 5750

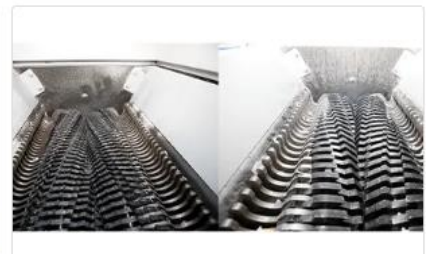
PRODUCT DESCRIPTION

The Duo Shredder 5750 has two-stage, fully automatic file disposal system. Depending on the type of material, a practical throughput of up to 800 kg / h can be achieved. In combination with an MWI baling press , the MWI Duo Shredder 5750 becomes a complete disposal system. Feeding of the material via conveyor belt or discharge chute.



PRODUCT INFO

The 5750 has Dual Shredding system. 1st stage pre-shredding as a four-shaft system, consisting of two intake shafts and two cutting shafts. 2nd stage post-shredding as a two-shaft system. Maximum speed is obtained through optimal coordination of the cutting units, gentle motor start-up and overload protection through frequency converters. Stable filling chute with integrated overfill protection controls the shredder and the conveyor belt.



TECHNICAL SPECIFICATION

Type of cut:	Particle cut	Security level	E-3 / O-2 / P-3 / T-3
Cutting width:	6 mm	DIN 66399 / IEC21964	
Particle length:	40-53 mm	Paper throughput	800 kg/h
Input Width	500 mm	Color	Light Grey
Voltage Frequency	400V / 500Hz	Bale weight	40-90 kg
Clippings: Paper, staples and paper clips, credit cards, files, USB sticks			

